



# Gender Diversity Statistics

January  
2018



# Overview

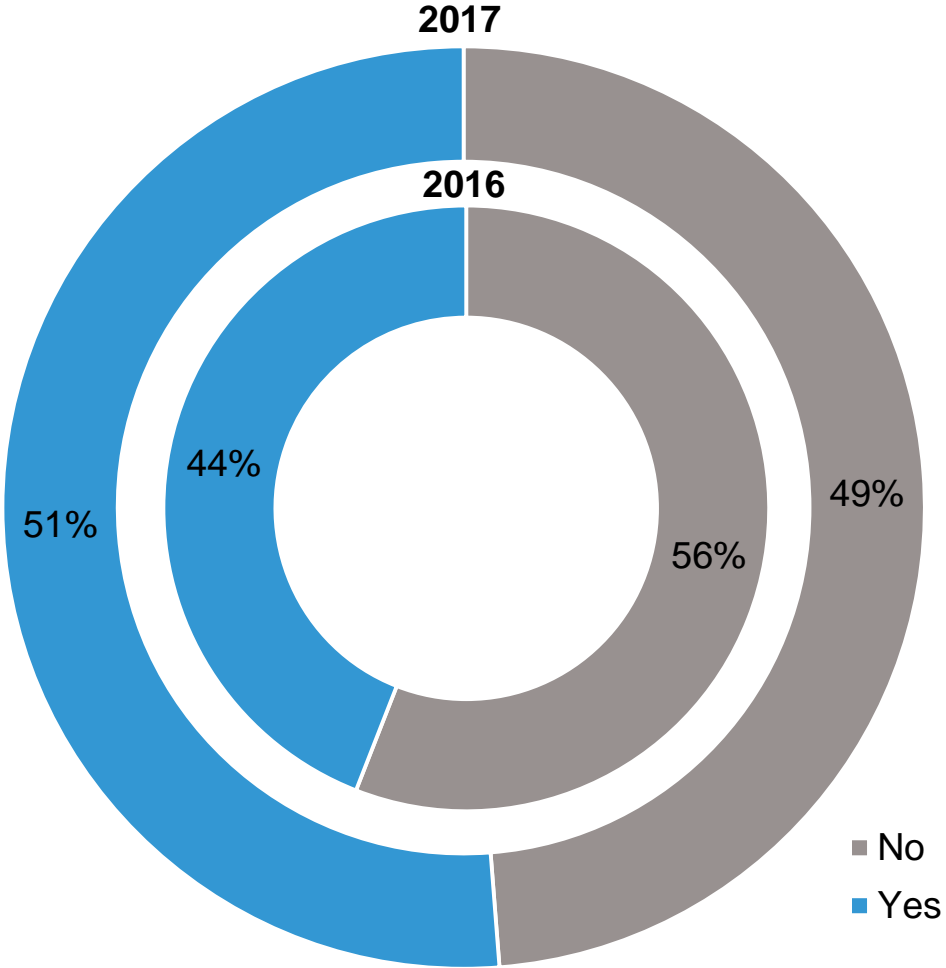
---

Under listing rule 10.4.5(j), issuers listed on the NZX Main Board (excluding overseas companies) are required to include in their annual report quantitative data on the gender breakdown of their directors and officers at the financial year end, together with comparative figures for the prior financial year end. This report summarises:

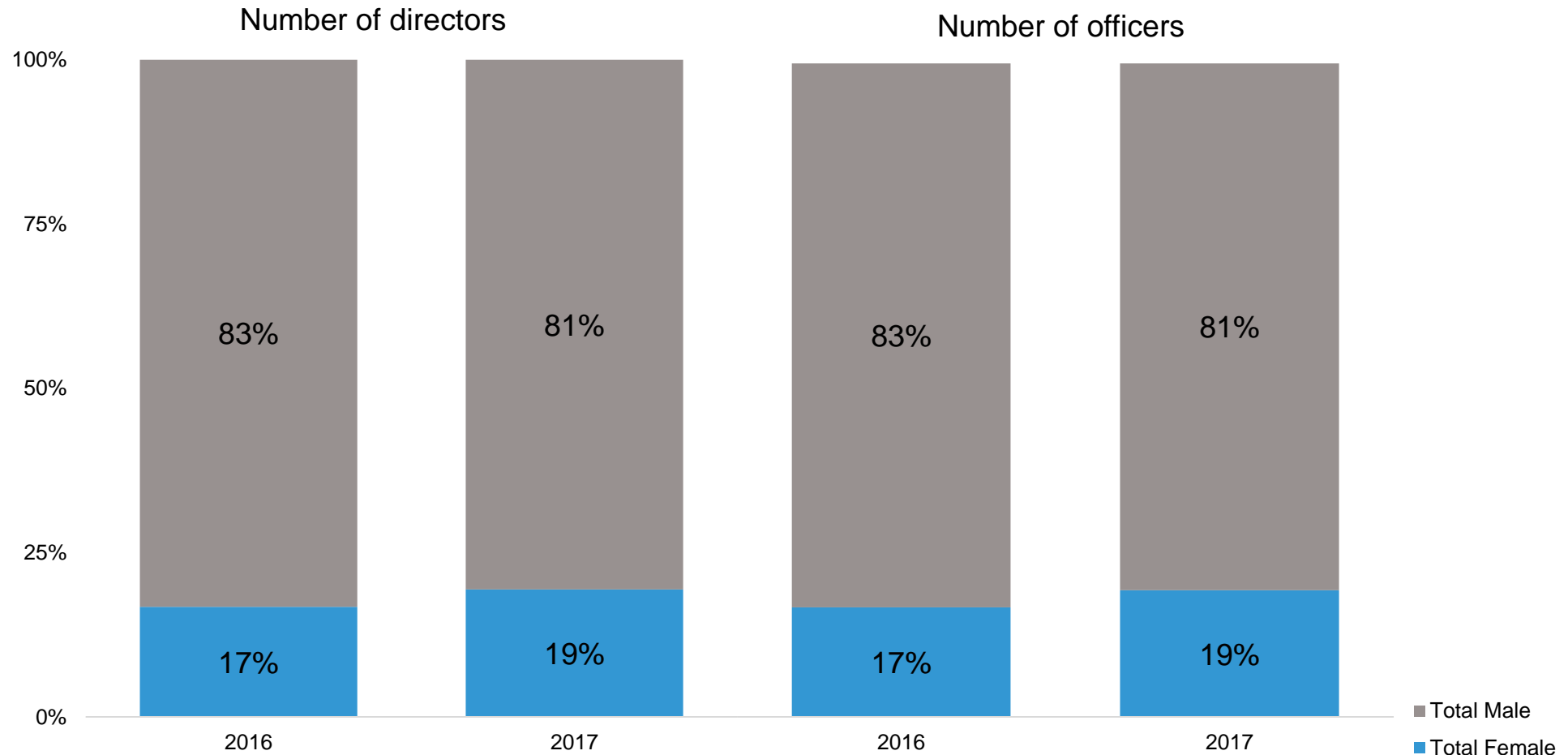
- ▶ NZX Main Board listed issuers which reported having a diversity policy
- ▶ Gender diversity of director and officers listed on the NZX Main Board
- ▶ Gender diversity of directors and officers listed on the S&P/NZX 50
- ▶ Gender diversity of directors and officers by market capitalisation
- ▶ Gender diversity of directors and officers by sector

*\*The gender diversity statistics are for the 12 month period to 31 December 2017.*

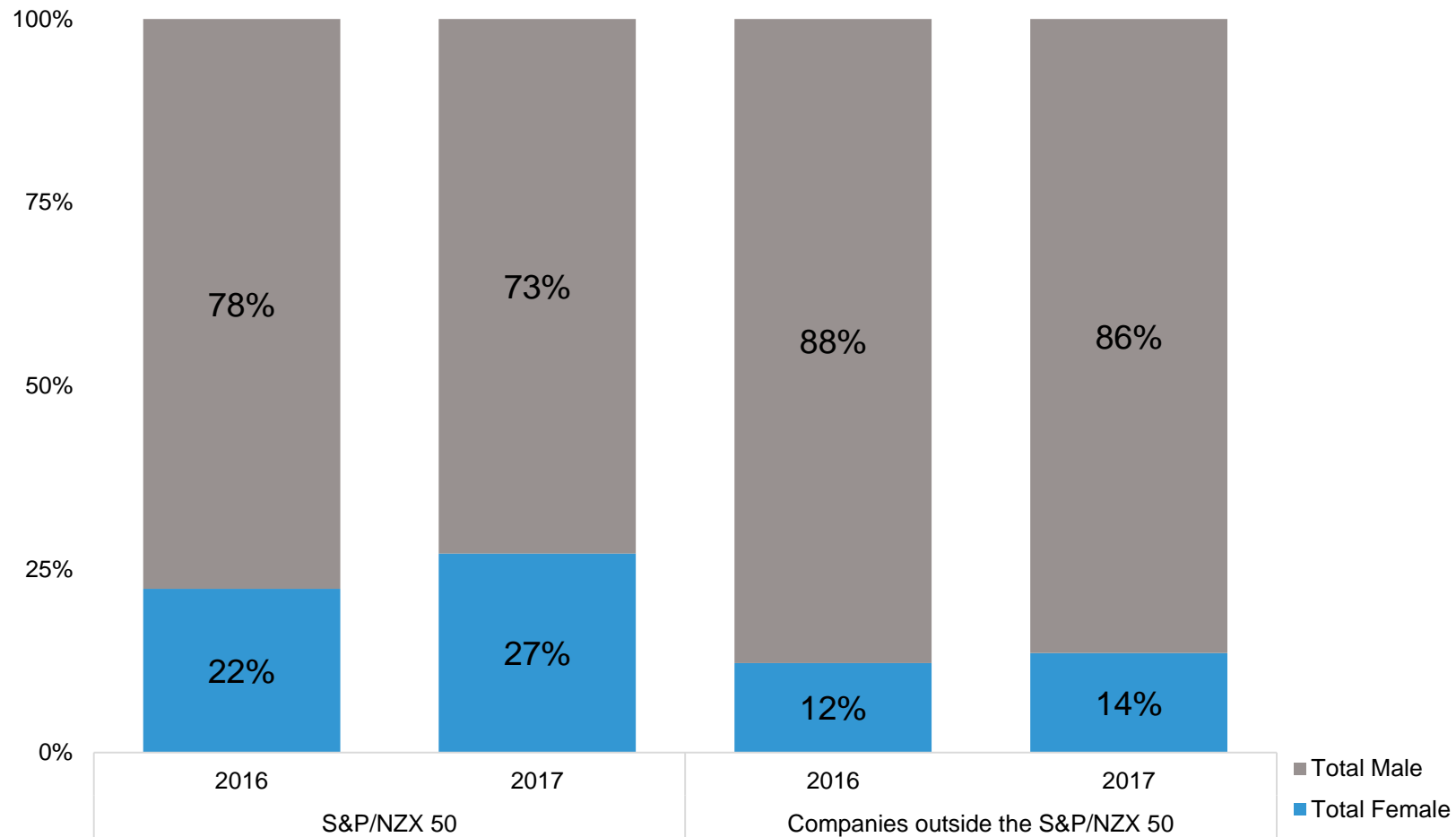
# NZX Main Board issuers with a diversity policy



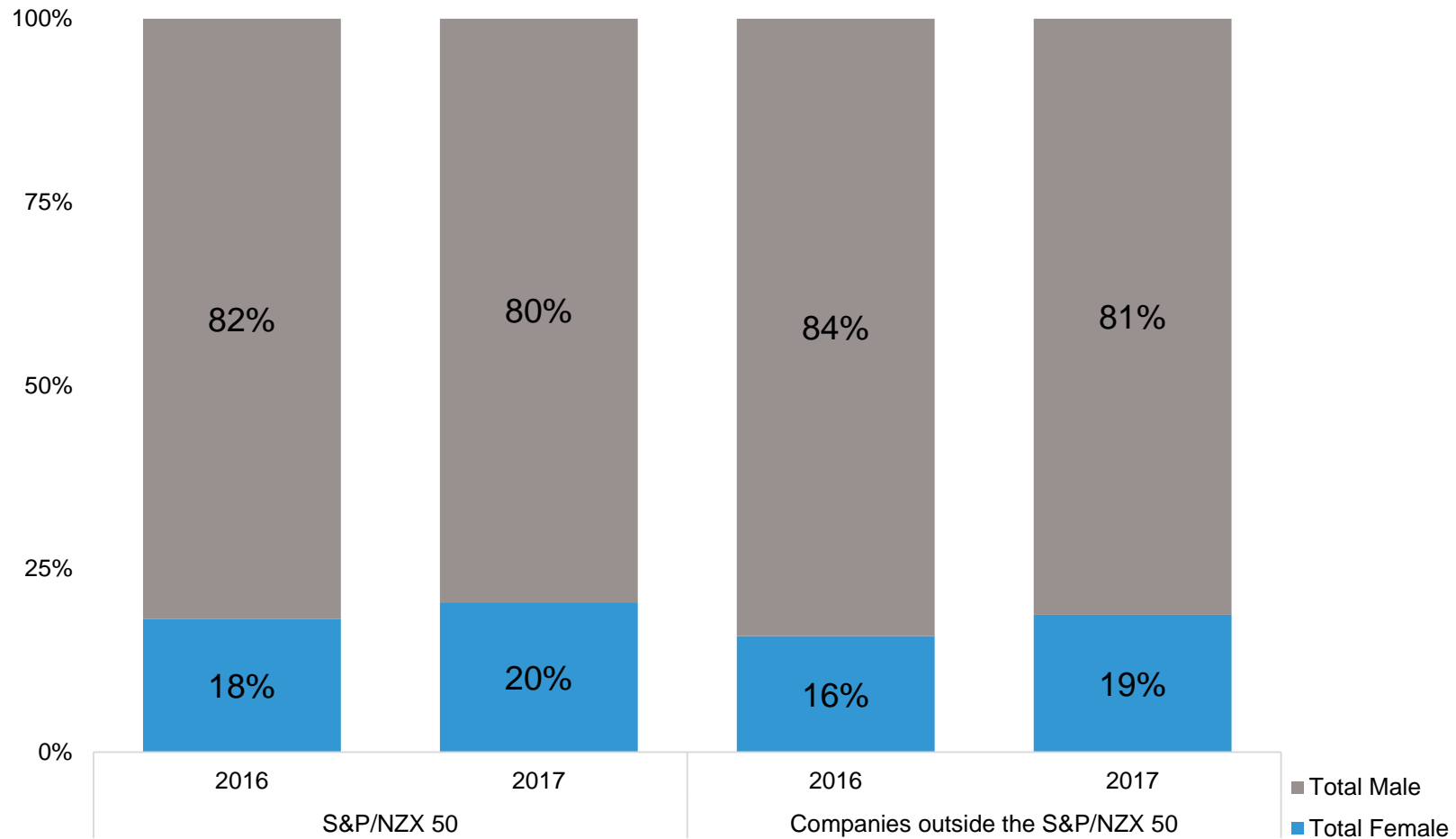
# Diversity of directors & officers on NZX Main Board



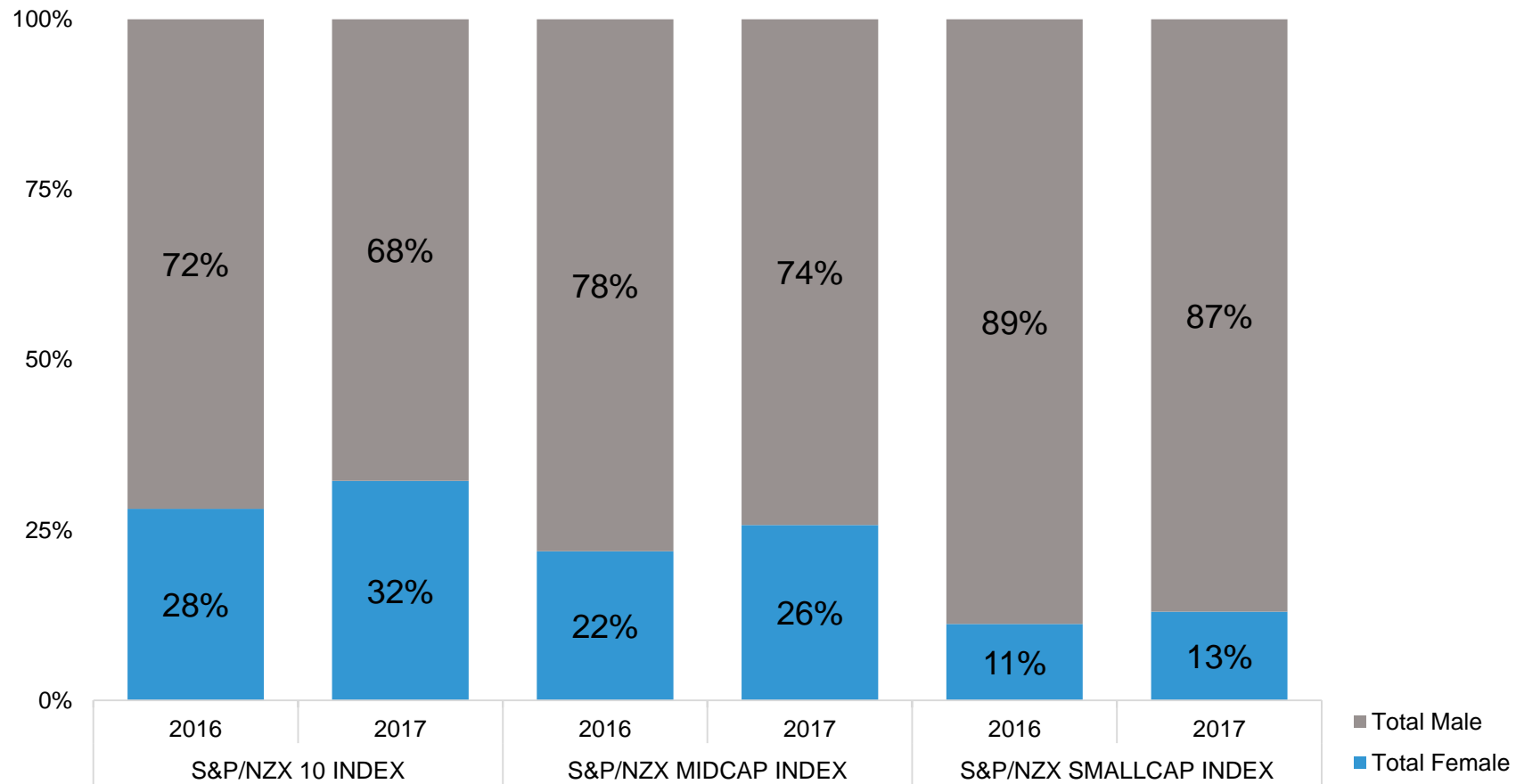
# Diversity of directors in the S&P/NZX 50



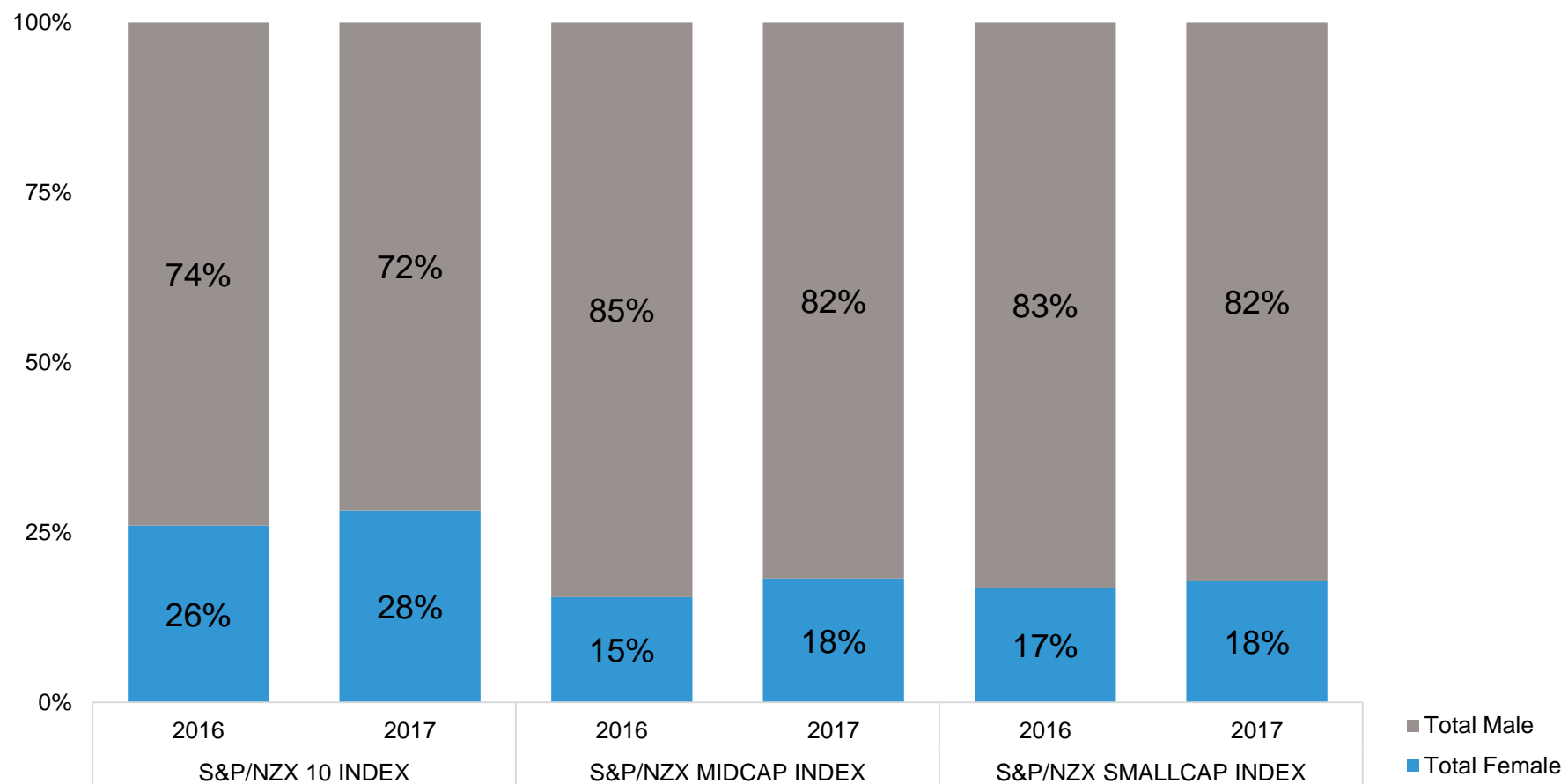
# Diversity of officers in the S&P/NZX 50



# Diversity of directors by market capitalisation

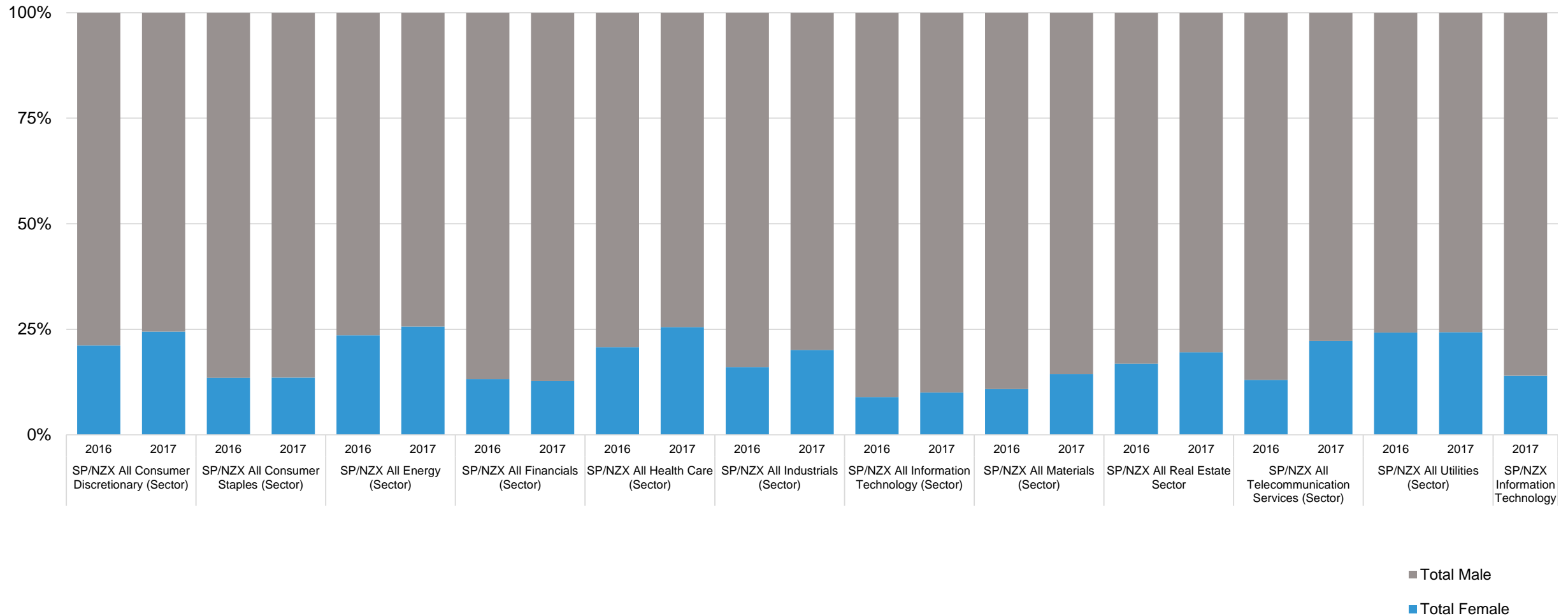


# Diversity of officers by market capitalisation

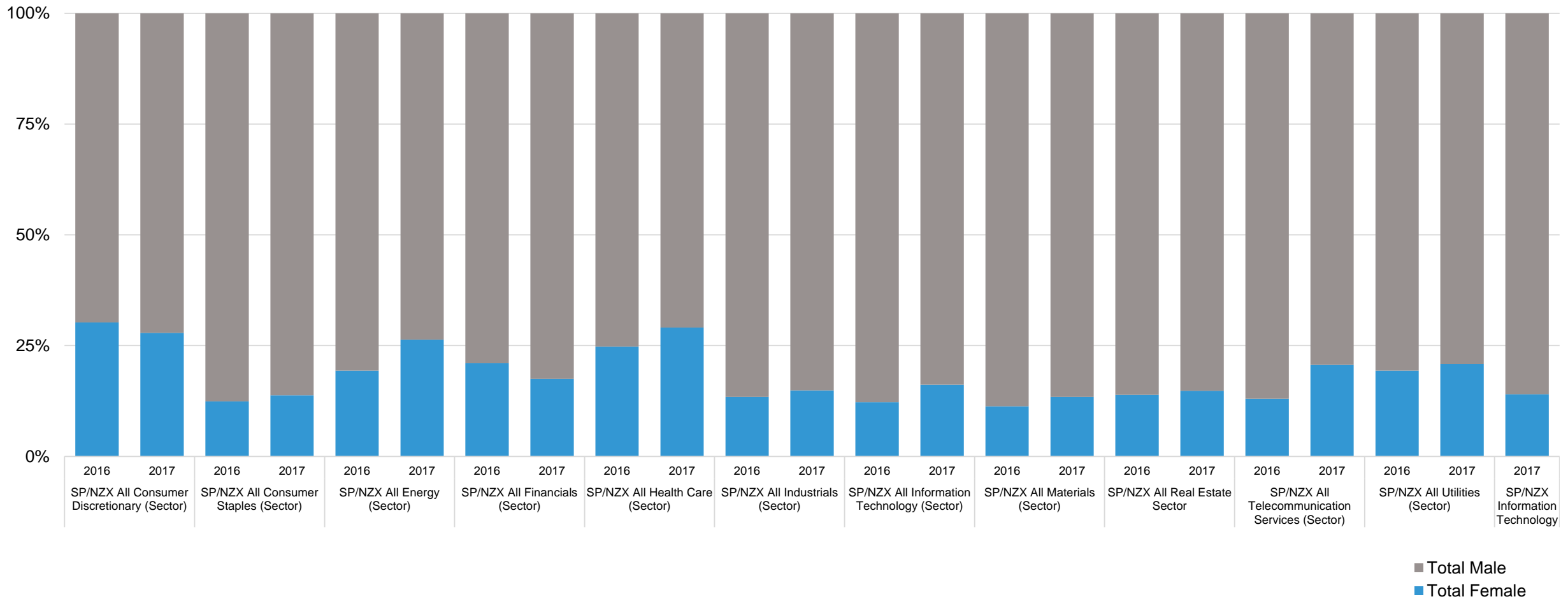




# Diversity of directors by sector



# Diversity of officers by sector





**For further information please contact:**

Hannah Lynch

Head of Communications

M: 021 252 8990

E: [hannah.lynch@nzx.com](mailto:hannah.lynch@nzx.com)